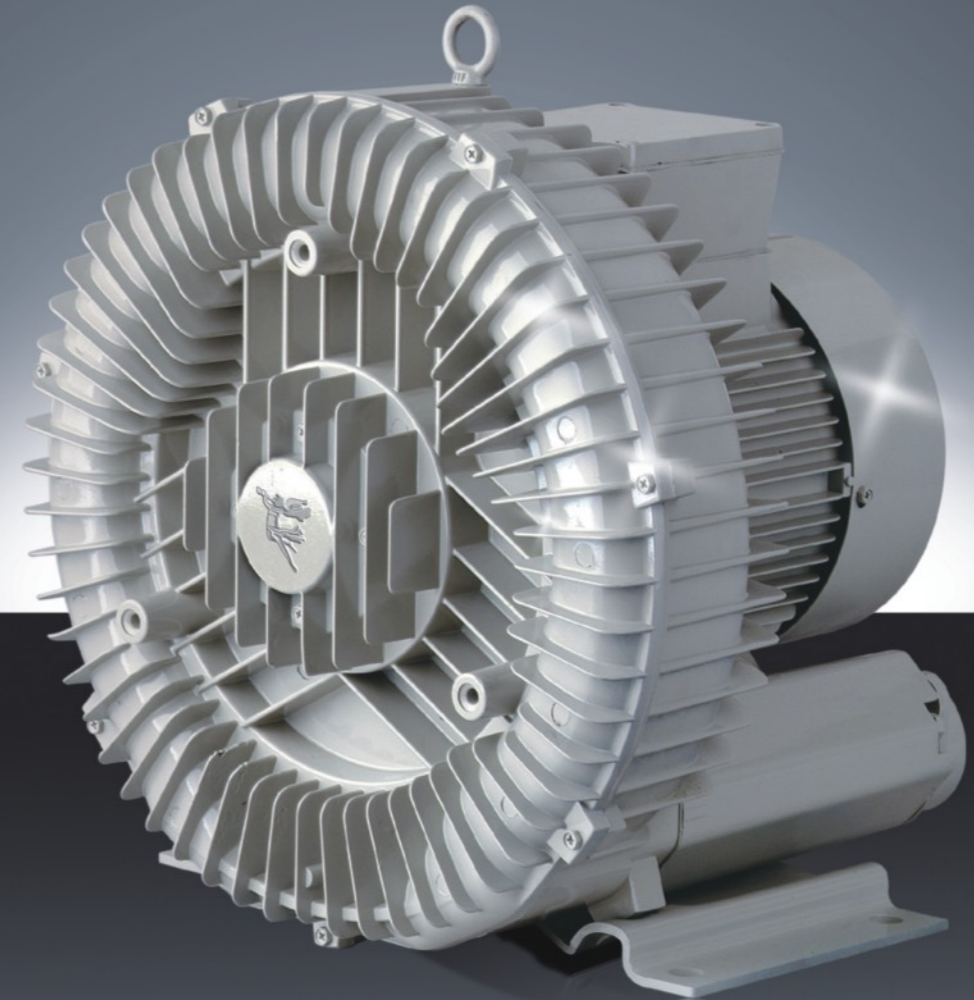


EMORE HORN Machinery inc.

The Blower Expert Original From Taiwan

臺灣風機專家



EMORE HORN
— 升鴻機電 —

升鴻機械設備有限公司

EMORE HORN Machinery inc.

地址:寧波市鄞州區姜山鎮茅山東林寺村

Donglinsi Villige, Jiangshan Town, Yinzhou District,

Ningbo, Zhejiang Prov., China

電話(TEI):86-574-88458298 傳真(FAX):86-574-88455980

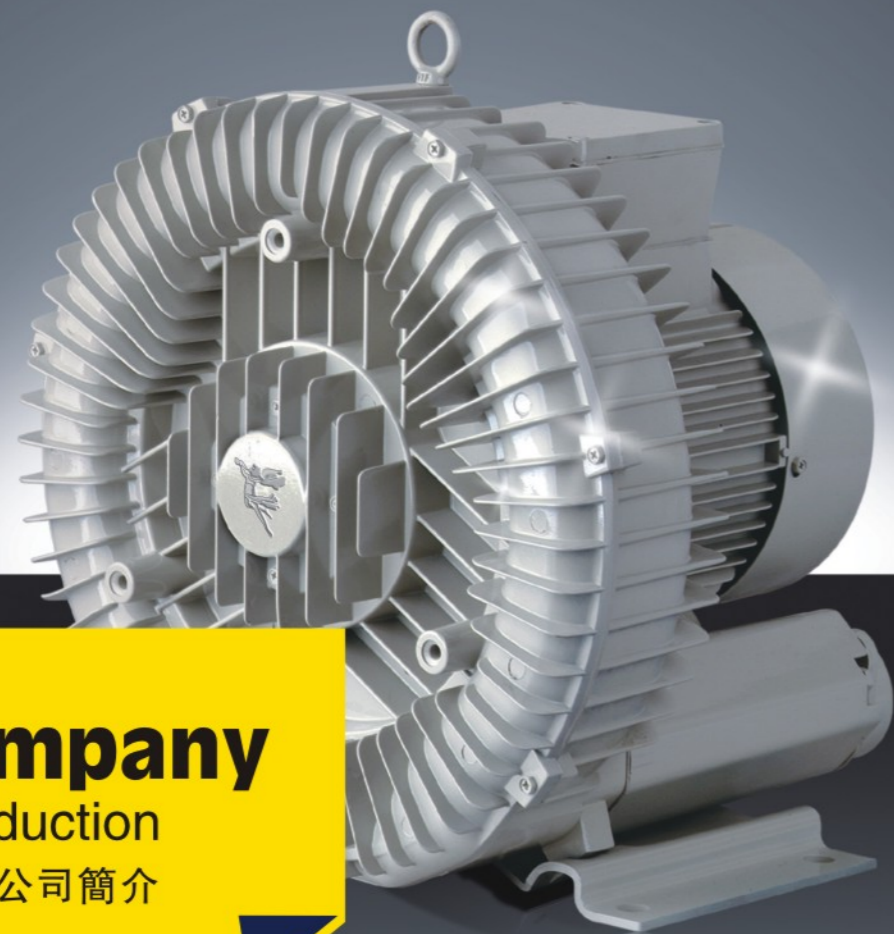
www.emorehorn.com Micbb0828@hotmail.com

升鴻機械設備有限公司

EMORE HORN Machinery inc.



EMORE HORN
— 升鴻機電 —



Company Introduction

公司簡介

本公司于1997年設廠。專業生產高壓高效能鼓風機精密真空泵浦零件及五金工具。其產品大量運銷國內外市場，名聲卓著，供不應求；因感于全球產業蓬勃發展，故決意增廠制銷，以供國內所需，進而外銷海外各地，也兼具提升工藝技術水平。

高壓鼓風機為生產製造業廣泛需用之機械，粉粒料的排，吸法輪，液體攪拌和裝瓶。燃燒和養殖的供養。散熱設備及環境之冷卻，無不需用它；由于高壓氣流的進口和氣流下端有負壓，因之亦可作為吸着應用。就業別而言，塑料，金屬，化工，礦業，農漁，醫療，裝填，包裝等等，均有極大地需求。通常鼓風機分為軸流式和離心式兩類，軸流式猶如在管中置一風扇，風量和壓力都不高；離心式又分為平流式和渦卷式，而渦卷式鼓風機可以生產較高之風壓。本公司專業于離心式側風道渦卷式高壓鼓風機的研發和生產。

本公司擁有技術高超的工程師及技術人員30餘人，廠房和辦公室近使用面積60000平方米，分為鼓風機研發生產部門，電動機研發生產部門，及真空泵浦研發生產部門。數位車床，鑽床，拉床，平衡機，恒溫烘箱等先進機具一應俱全外，更具有極精密之3D量具、電動測試機、及風量壓力測試儀器。尤不同于業務生產等傳統部門者，本公司的品保部門為一獨立之一級單位，對於零部件，不論為自制或外購均詳加檢測，所有成品入倉前再作各項功能、安全和包裝檢測，以確保生產的每一貨品完美無瑕，給予使用者最大的可靠度。本公司產品均通過國家資檢局的3C檢驗，和SGS的認證，質量和安全有極大保障，每月產量各型合計5000臺。

當今科技日新月異，不進則退，產品推陳出新，多如繁星，本公司同仁不敢倨傲，時時虛心候教，歡迎閣下光臨或賜電指導。

The Blower Expert Original From Taiwan 臺灣風機專家

Company Introduction

Founded in 1994, this company is specialized in manufacturing, the high pressure and high efficiency air blowers, precision vacuum pumps and parts, the tools. Products are sold widely in the domestic and overseas market. It gets the high reputation.

High pressure air blowers are widely applicable for the machinery, exhaust of the powder and granules, the suction conveyance, the liquid agitation, bottle packing, combustion the air supply to the aquatics, cooling of the radiation equipments and the environments in the manufacture industries. Because negative pressure exists in the entry of the high pressure current and lower part of the air stream, therefore it can have the suction application. As far as the industry is concerned, it gets the high demands from the plastics, metal, chemical, mine, farming, fishing, medicate, filling, packaging and so on. Usually air blower is divided into axial flow and centrifugal type. Regarding the axial flow, it is like place a fan in a tube. It has low blast and pressure. The centrifugal type is divided into the smooth flow and vortex type. Vortex blower can produce the high wind pressure. The company is specialized in researching into, developing, manufacturing the centrifugal type side duct vortex high pressure blowers.

We possess over 30 engineers and technicians. Work on the area of 6000 square meters. It is divided into blower R&D, Production Dept. Electric Motor R&D Production Dept, Vacuum Pump R&D, Production Dept. It has all the advanced and necessary lathes, driller, broacher, balancing machine, constant temperature over etc. Furthermore, it is allocated with the extremely accurate 3D measuring instruments, the electric tester, blast pressure, testing apparatus. It is especially different from the traditional departments such as the business, production etc, Our quality guarantee departments are the independent and first-level units. It always carefully checks the spares and parts which are made by ourselves and purchased from the outside. All the final products pass the testing to various functions, safety, packaging before going to the warehouses in order to ensure that every product reaches the acme of perfection. It grandly max reliability to the users. Our products pass 3C Examination and SGS Certification from the State Qualified inspection Bureaus. It greatly guarantees the quality and security. The productive capacity totals to 5,000 sets of various models every month.

Technology is changing at every passing day at present. Stand still means set back. We constantly upgrade the products at great numbers. The colleagues of our company dare not to be proud. On the contrary, we often ask for directions at any times. Welcome the honored guests come to visit us or call us in order to give instructions to us.



Air blower series

鼓風機系列

EMORE HORN Machinery inc.



EHS429/429-9/429L



EHS529/529-9/529L
629/629L/639



EHS-8310



EHS-4337



EHS919/929/939



EHS729/829



EHS-6355



EHS329/329-9
329L/339



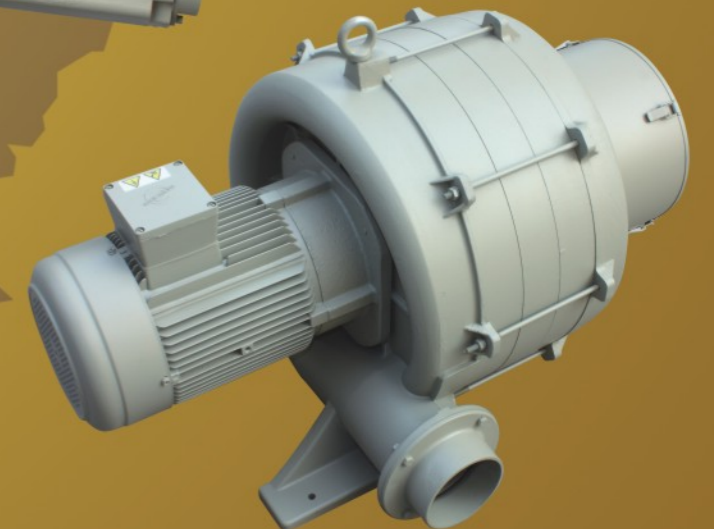
EHS-9325



EHS229/229L



EHS129



ETB-125-1005

The Blower Expert Original From Taiwan

臺灣風機專家

Qualification 企業資質



About Future

》我们的目标

用我們的產品去連接世界的每個角落

》我们的理念

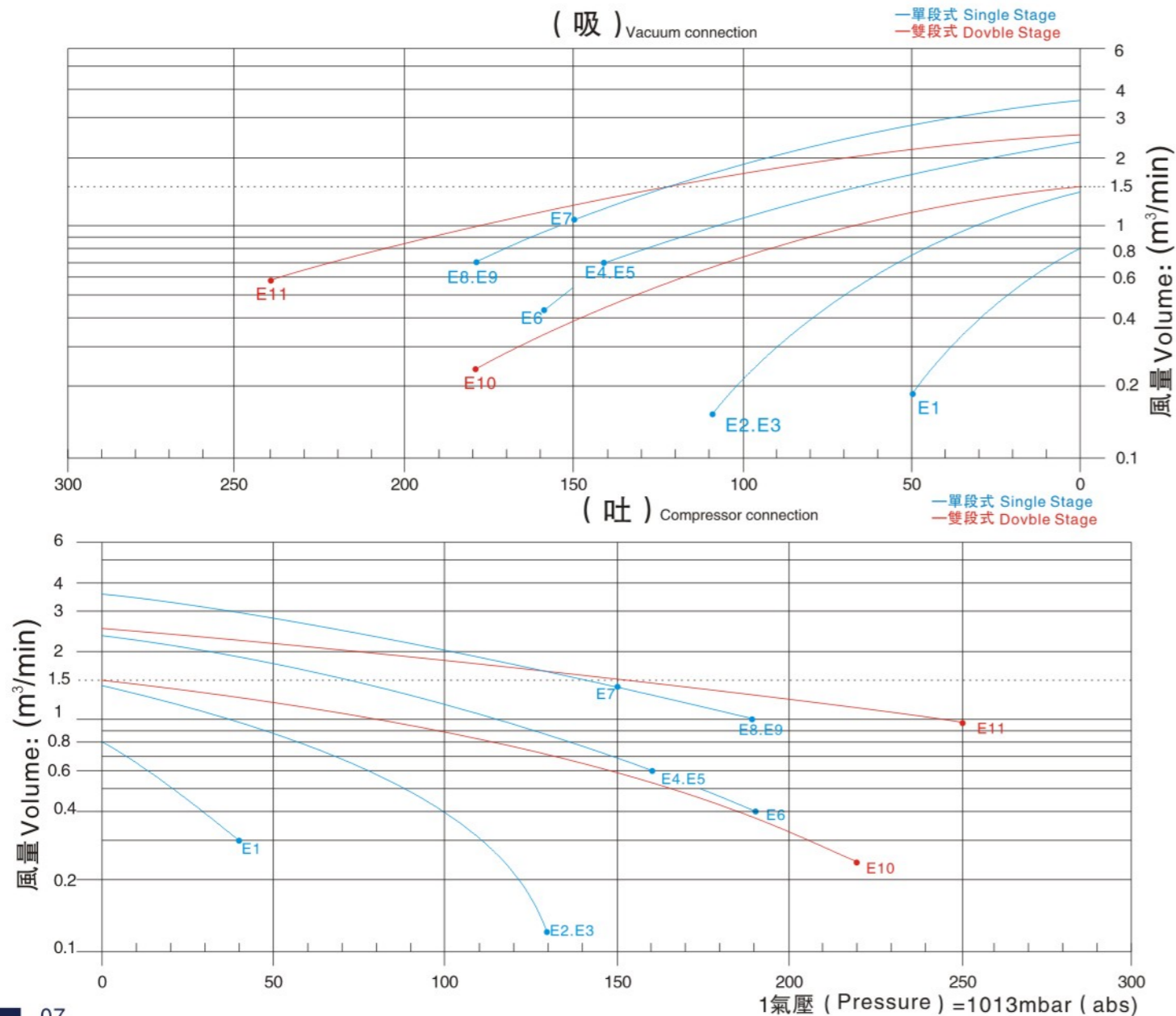
對客戶:我們提供高品質,低成本的產品,我們的定單必須迅速而精確的完成;
對員工:對我們一起工作的同仁,有建議和申訴制度,够格的必須有晉升的機會;
對社會:必須對我們的社會負責,必須做個好公民,支持正義,依法納稅。



單相馬達, 50HZ吸/吐性能表 Single-phase motor, 50Hz handling performance table

編號	型號 Model 50HZ	額定輸出 Rated output (kw)	電壓 Voltage (V)	電流 Current (A)	電壓 Voltage (V)	電流 Current (A)	吸/吐壓力差 Static pressure Vacuum/Compressor (mbar)	最大流量 Max volume (M ³ /min)	噪音比 Noise (Db)	重量 Weight (kg)	釋壓閥 (relief valve) 吸/吐 (Pressure) 型號(Type): PV-□*□	過濾器 Suction filter
E1	EHS-129	0.18	110-120	2.5	220-240	1.25	50/40	0.8	52	6.5	-	MF8
E2	EHS-229	0.4	110-120	5.5	220-240	2.6	110/130	1.4	58	11.5	01*1/01*1	MF10
E3	EHS-229L	0.4	110-120	5.5	220-240	2.6	110/130	1.4	58	12	01*1/01*1	MF10
E4	EHS-329	0.75	110-120	11	220-240	5.5	140/160	2.4	63	16	01*1/01*1	MF12
E5	EHS-329-L	0.75	110-120	11	220-240	5.5	140/160	2.4	63	16.5	01*1/01*1	MF12
E6	EHS-339	1.1	-	-	220-240	7.0	160/190	2.4	63	16.5	01*1/01*1	MF12
E7	EHS-429-2	1.1	-	-	220-240	8.5	150/150	3.6	70	26	01*1/01*1	MF16
E8	EHS-429	1.5	-	-	220-240	10	180/190	3.6	70	26	01*1/01*1	MF16
E9	EHS-429L	1.5	-	-	220-240	10	180/190	3.6	70	26.5	01*1/01*1	MF16
E10	EHS-2308	0.75	110-120	9.2	220-240	4.5	180/220	1.5	60	17.5	01*1/01*1	MF10
E11	EHS-3315	1.5	-	-	220-240	10	240/250	2.6	66	28.5	01*1/01*1	MF12

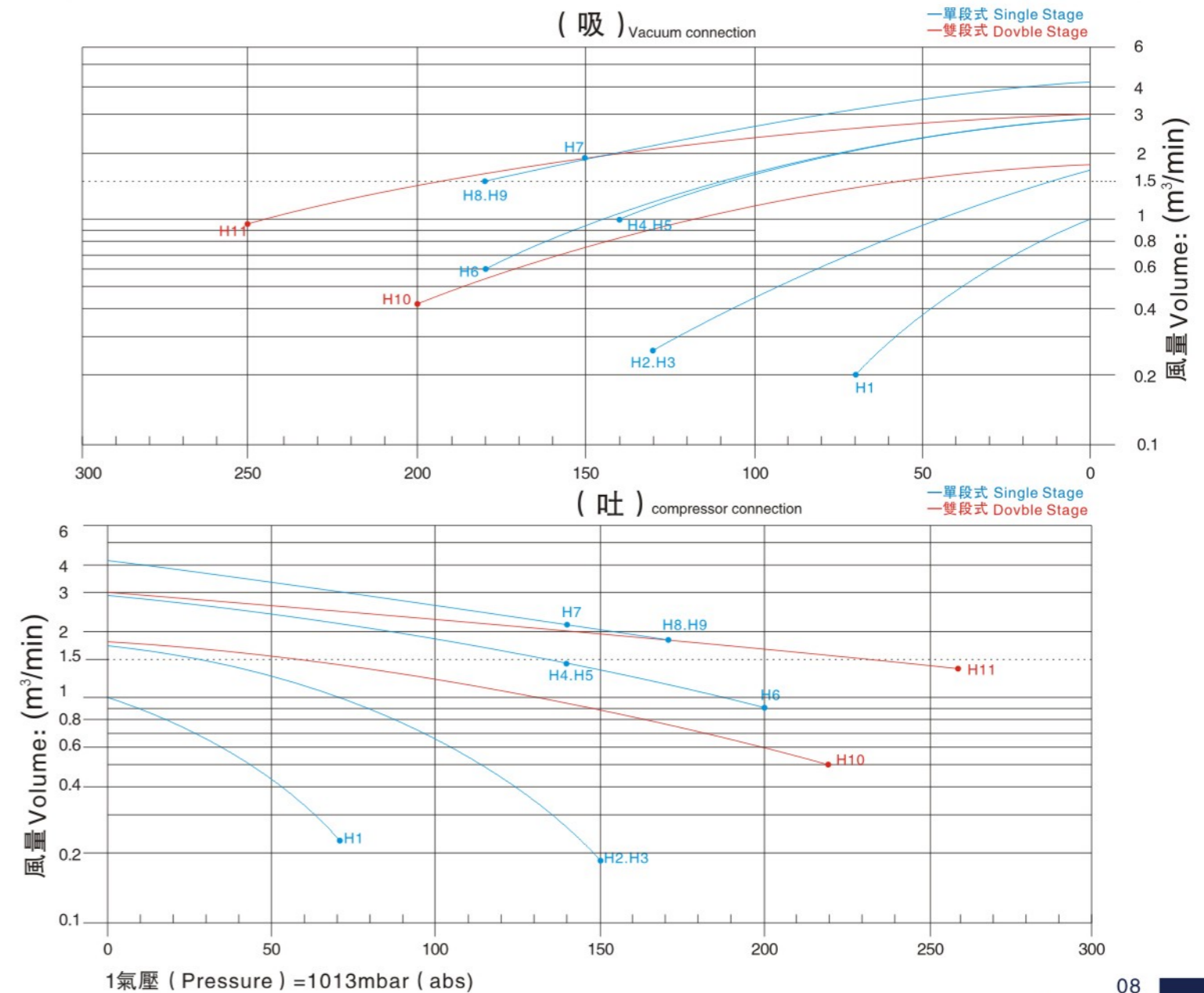
單相馬達, 50HZ吸/吐曲綫圖 Single-phase motor, 50Hz handling curve diagram



單相馬達, 60HZ吸/吐性能表 Single-phase motor, 60Hz handling performance table

編號	型號 Model 60HZ	額定輸出 rated output (Kw)	電壓 Voltage (V)	電流 Current (A)	電壓 Voltage (V)	電流 Current (A)	吸/吐壓力差 Static pressure Vacuum/Compressor (mbar)	最大流量 Max volume (M ³ /min)	噪音比 Noise (Db)	重量 Weight (kg)	釋壓閥 (relief valve) 吸/吐 (Pressure) 型號(Type): PV-□*□	過濾器 Suction filter
H1	EHS-129	0.2	110-120	2.55	220-240	1.28	70/70	1.0	55	6.5	-	MF8
H2	EHS-229	0.5	110-120	7.4	220-240	3.5	130/150	1.7	61	11.5	01*1/01*1	MF10
H3	EHS-229L	0.5	110-120	7.4	220-240	3.5	130/150	1.7	61	12	01*1/01*1	MF10
H4	EHS-329	0.85	110-120	12	220-240	6.0	140/140	2.9	64	16	01*1/01*1	MF12
H5	EHS-329-L	0.85	110-120	12	220-240	6.0	140/140	2.9	64	16.5	01*1/01*1	MF12
H6	EHS-339	1.3	-	-	220-240	7.4	180/200	2.9	64	16.5	01*1/01*1	MF12
H7	EHS-429-2	1.3	-	-	220-240	9.5	150/140	4.2	73	26	01*1/01*1	MF16
H8	EHS-429	1.75	-	-	220-240	10.8	180/170	4.2	73	26	01*1/01*1	MF16
H9	EHS-429L	1.75	-	-	220-240	10.8	180/170	4.2	73	26.5	01*1/01*1	MF16
H10	EHS-2308	0.85	110-120	11	220-240	5.4	200/220	1.8	66	17.5	01*1/01*1	MF10
H11	EHS-3315	1.75	-	-	220-240	10.8	250/260	3.0	69	28.5	01*1/01*1	MF12

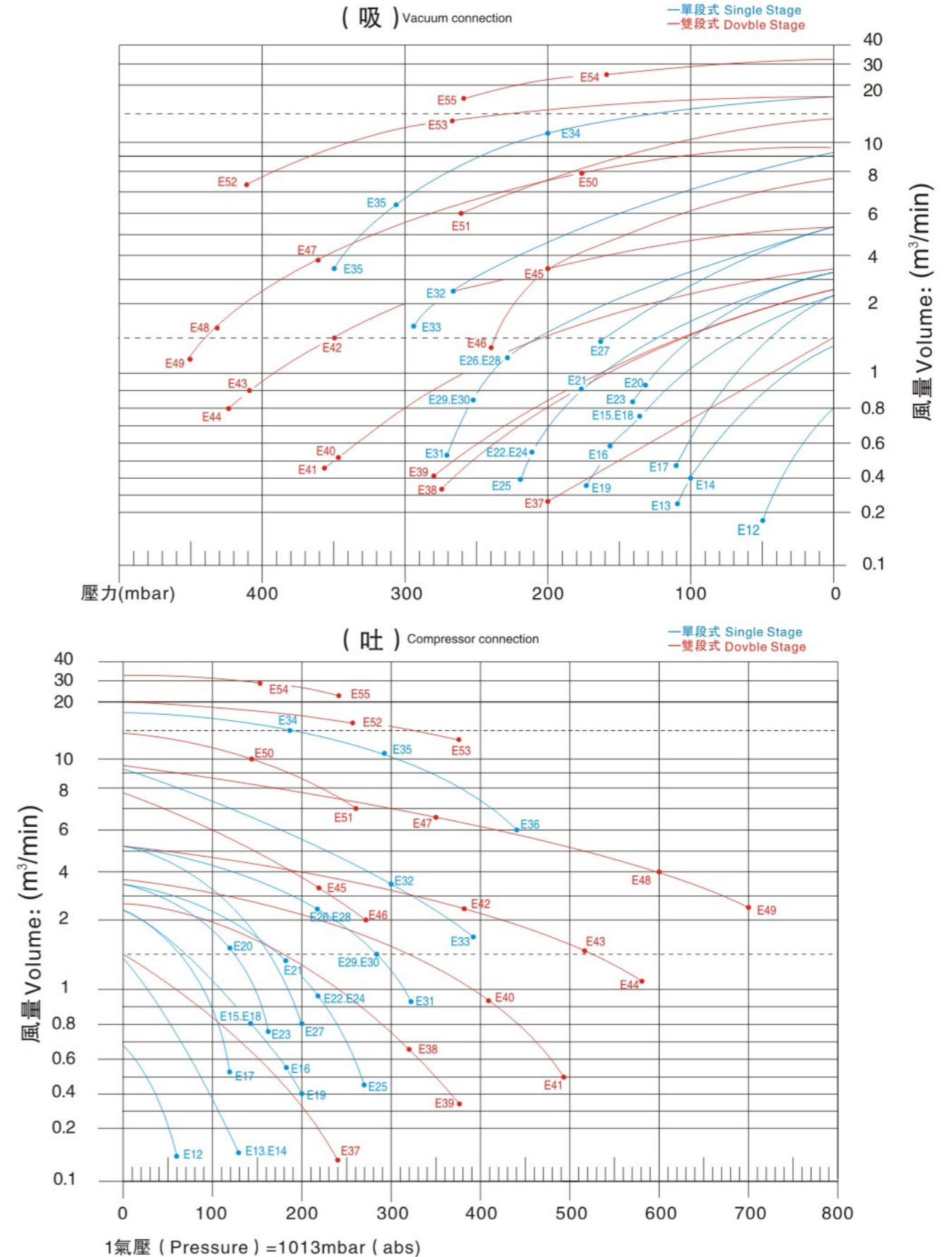
單相馬達, 60HZ吸/吐曲綫圖 Single-phase motor, 60Hz handling curve diagram



三相馬達, 50HZ吸/吐性能表 Three-phase motor, 50Hz handling performance table

編號	型號 Model 50HZ	額定輸出 Rated output (Kw)	電壓 Voltage (V)	電流 Current (A)	電壓 Voltage (V)	電流 Current (A)	吸/吐 壓力差 Static pressure Vacuum/Compressor (mbar)	最大流量 Max volume (M ³ /min)	噪音比 Noise (Db)	重量 Weight (kg)	釋壓閥 (relief valve) 吸/吐 (Pressure) 型號(Type): PV-□□	過濾器 Suction filter
E12	EHS-129	0.18	220-240	1.2	380-415	0.69	50/60	0.8	52	6.5	-	MF8
E13	EHS-229	0.4	220-240	2.25	380-415	1.29	110/130	1.4	58	11	01*1/01*1	MF10
E14	EHS-229L	0.4	220-240	2.25	380-415	1.29	100/130	1.4	58	11.5	01*1/01*1	MF10
E15	EHS-329	0.75	220-240	3.7	380-415	2.14	140/140	2.4	63	14.5	01*1/01*1	MF12
E16	EHS-329-1	0.9	220-240	4.2	380-415	2.4	165/180	2.4	63	15.5	01*1/01*1	MF12
E17	EHS-329-9	0.75	220-240	3.7	380-415	2.14	110/120	2.4	63	14.5	01*1/01*1	MF12
E18	EHS-329L	0.75	220-240	3.7	380-415	2.14	140/140	2.4	63	15	01*1/01*1	MF12
E19	EHS-339	1.3	220-240	4.6	380-415	2.65	175/200	2.4	63	16	01*1/01*1	MF12
E20	EHS-429-1	0.9	220-240	4.2	380-415	2.4	130/120	3.6	70	20.5	01*1/01*1	MF16
E21	EHS-429-2	1.3	220-240	5.7	380-415	3.3	180/180	3.6	70	22	01*1/01*1	MF16
E22	EHS-429	1.75	220-240	6.7	380-415	3.9	210/220	3.6	70	23	01*1/01*1	MF16
E23	EHS-429-9	1.75	220-240	6.7	380-415	3.9	140/160	3.6	70	23	01*1/01*1	MF16
E24	EHS-429L	1.75	220-240	6.7	380-415	3.9	210/220	3.6	70	23.5	01*1/01*1	MF16
E25	EHS-439	2.2	220-240	7.8	380-415	4.5	220/270	3.6	70	26	01*1/01*1	MF16
E26	EHS-529	2.2	220-240	9.5	380-415	5.5	230/220	5.2	72	32	01*1/01*1	MF16
E27	EHS-529-9	2.2	220-240	9.5	380-415	5.5	160/200	5.2	72	32	01*1/01*1	MF16
E28	EHS-529L	2.2	220-240	9.5	380-415	5.5	230/220	5.2	72	32.5	01*1/01*1	MF16
E29	EHS-629	3.4	220-240	12	380-415	6.9	255/280	5.2	72	35	01*1/01*1	MF16
E30	EHS-629L	3.4	220-240	12	380-415	6.9	255/280	5.2	72	35.5	01*1/01*1	MF16
E31	EHS-639	4.0	220-240	13.9	380-415	8.0	270/325	5.2	72	38	01*1/02*1	MF16
E32	EHS-729	5.5	220-240	21	380-415	12	270/300	9.2	74	78	01*1/02*1	MF20
E33	EHS-829	7.5	220-240	27	380-415	15.6	295/395	9.2	74	82	02*1/02*1	MF20
E34	EHS-919	9	220-240	36	380-415	20.8	200/190	18.9	76	100	-	MF32
E35	EHS-929	13	220-240	46.8	380-415	27	305/295	18.9	76	112	-	MF32
E36	EHS-939	20	220-240	66.7	380-415	38.6	350/440	18.9	76	159	-	MF32
E37	EHS-2308	0.75	220-240	3.45	380-415	2.0	200/240	1.5	60	17	01*1/01*1	MF10
E38	EHS-3319	1.75	220-240	6.7	380-415	3.9	275/320	2.6	66	25	01*1/02*1	MF12
E39	EHS-3326	2.2	220-240	7.8	380-415	4.5	280/375	2.6	66	28	01*1/02*1	MF12
E40	EHS-4337	3.4	220-240	12	380-415	6.9	345/410	3.7	74	40	02*1/02*1	MF16
E41	EHS-4346	4.0	220-240	14.3	380-415	8.3	355/495	3.7	74	43	02*1/02*1	MF16
E42	EHS-6346	4.0	220-240	14.3	380-415	8.3	360/380	5.2	75	55	02*1/02*1	MF16
E43	EHS-6355	5.5	220-240	21	380-415	12	410/515	5.2	75	72	02*1/02*2	MF16
E44	EHS-6375	7.5	220-240	27	380-415	15.6	420/580	5.2	75	80.5	02*1/02*2	MF16
E45	EHS-6455	5.5	220-240	21	380-415	12	200/220	7.8	75	70	01*1/01*1	MF16
E46	EHS-6475	7.5	220-240	27	380-415	15.6	240/275	7.8	75	80.5	01*1/01*1	MF16
E47	EHS-8310	7.5	220-240	27	380-415	15.6	360/350	9.6	76	112	02*1/02*1	MF20
E48	EHS-8315	13	220-240	46.8	380-415	27	430/600	9.6	76	142	02*1/02*3	MF20
E49	EHS-8320	20	220-240	66.7	380-415	38.6	450/700	9.6	76	160	02*1/02*3	MF20
E50	EHS-8410	7.5	220-240	27	380-415	15.6	180/145	14.2	76	110	-	MF20
E51	EHS-8415	13	220-240	46.8	380-415	27	260/260	14.2	76	140	-	MF20
E52	EHS-9320	13	220-240	46.8	346-415	27	265/255	19	75	165	-	MF32
E53	EHS-9325	20	220-240	66.7	346-415	38.6	410/375	19	75	178	-	MF32
E54	EHS-9420	13	220-240	46.8	346-415	27	160/150	32	76	170	-	MF32
E55	EHS-9425	20	220-240	66.7	346-415	38.6	260/240	32	76	200	-	MF32

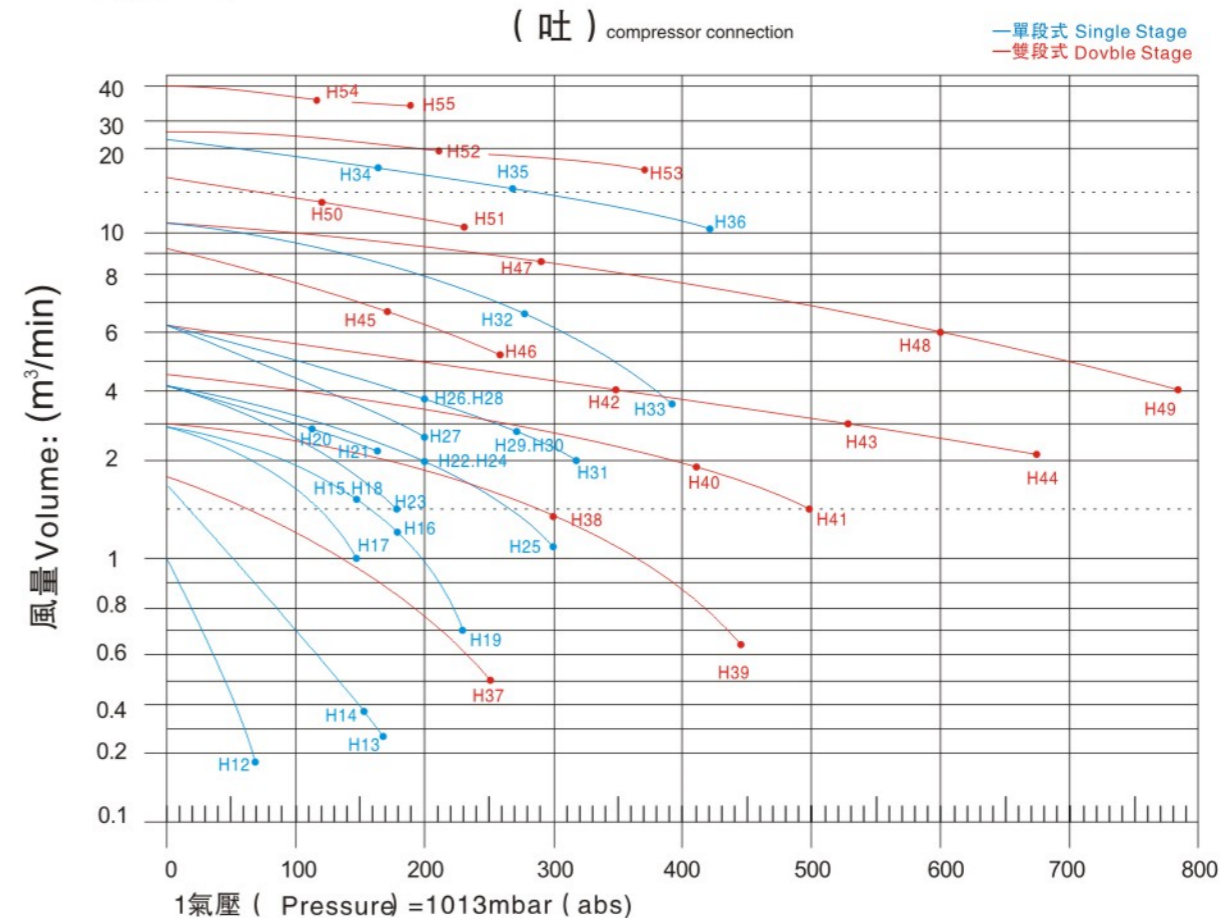
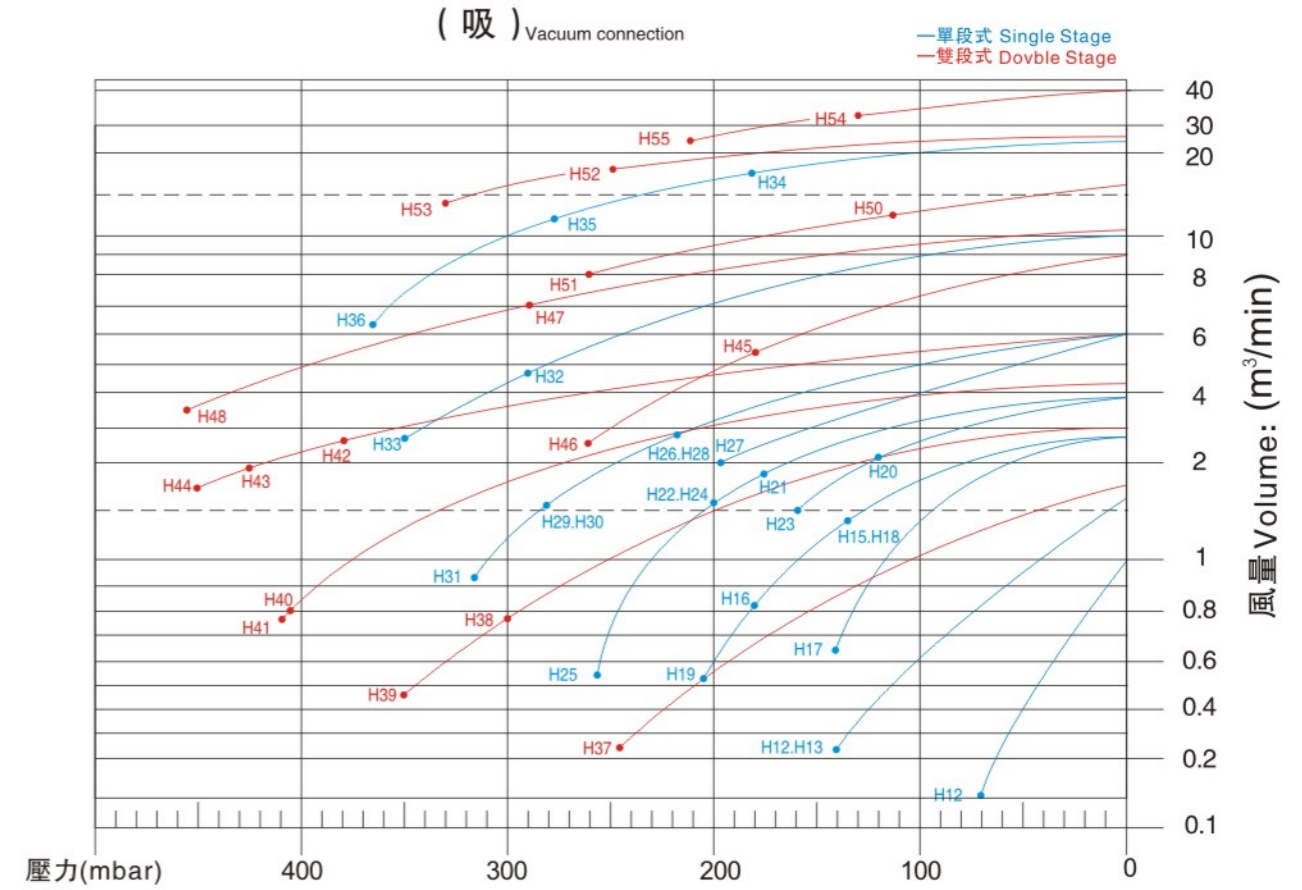
三相馬達, 50HZ吸/吐曲綫圖 three-phase motor, 50Hz handling curve diagram



三相馬達, 60HZ吸/吐性能表 Three-phase motor, 60Hz handling performance table

編號	型號 Model 60HZ	額定輸出 rated output (Kw)	電壓 Voltage (V)	電流 Current (A)	電壓 Voltage (V)	電流 Current (A)	吸/吐壓力差 Static pressure Vacuum/Compressor (mbar)	最大流量 Max volume (M ³ /min)	噪音比 Noise (Db)	重量 Weight (kg)	釋壓閥 (relief valve) 吸/吐 (Pressure) 型號(Type): PV-□*□	過濾器 Suction filter
H12	EHS-129	0.2	220-240	0.9	380-415	0.5	70/70	1.0	55	6.5	-	MF8
H13	EHS-229	0.5	220-240	2.4	380-415	1.38	140/170	1.7	61	11	01*1/01*1	MF10
H14	EHS-229L	0.5	220-240	2.4	380-415	1.38	140/150	1.7	61	11.5	01*1/01*1	MF10
H15	EHS-329	0.85	220-240	3.9	380-415	2.25	140/140	2.9	64	14.5	01*1/01*1	MF12
H16	EHS-329-1	1.1	220-240	4.5	380-415	2.6	180/180	2.9	64	15.5	01*1/01*1	MF12
H17	EHS-329-9	0.85	220-240	3.6	380-415	2.1	140/140	2.9	64	14.5	01*1/01*1	MF12
H18	EHS-329L	0.85	220-240	3.9	380-415	2.25	140/140	2.9	64	15	01*1/01*1	MF12
H19	EHS-339	1.5	220-240	5.25	380-415	3	205/230	2.9	64	16	01*1/01*1	MF12
H20	EHS-429-1	1.1	220-240	4.5	380-415	2.6	120/110	4.2	73	20.5	01*1/01*1	MF16
H21	EHS-429-2	1.5	220-240	6	380-415	3.5	170/160	4.2	73	22	01*1/01*1	MF16
H22	EHS-429	1.9	220-240	7.0	380-415	4.0	200/200	4.2	73	23	01*1/01*1	MF16
H23	EHS-429-9	1.9	220-240	7.0	380-415	4.0	160/180	4.2	73	23	01*1/01*1	MF16
H24	EHS-429L	1.9	220-240	7.0	380-415	4.0	200/200	4.2	73	23.5	01*1/01*1	MF16
H25	EHS-439	2.6	220-240	9.5	380-415	5.5	255/300	4.2	73	26	01*1/01*1	MF16
H26	EHS-529	2.6	220-240	10.7	380-415	6.2	220/200	6.2	77	32	01*1/01*1	MF16
H27	EHS-529-9	2.6	220-240	10.7	380-415	6.2	195/200	6.2	77	32	01*1/01*1	MF16
H28	EHS-529L	2.6	220-240	10.7	380-415	6.2	220/200	6.2	77	32.5	01*1/01*1	MF16
H29	EHS-629	3.7	220-240	13.2	380-415	7.6	280/270	6.2	77	35	01*1/01*1	MF16
H30	EHS-629L	3.7	220-240	13.2	380-415	7.6	280/270	6.2	77	35.5	01*1/01*1	MF16
H31	EHS-639	4.6	220-240	15.3	380-415	8.9	315/320	6.2	77	38	02*1/02*1	MF16
H32	EHS-729	6.3	220-240	26.5	380-415	15.3	290/280	10.9	79	78	01*1/01*2	MF20
H33	EHS-829	8.6	220-240	34	380-415	19.6	350/395	10.9	79	82	02*1/02*1	MF20
H34	EHS-919	11	220-240	37	380-415	21.4	180/170	22.4	81	100	-	MF32
H35	EHS-929	15	220-240	51.5	380-415	29.8	280/270	22.4	81	112	-	MF32
H36	EHS-939	22	220-240	76.1	380-415	44	365/420	22.4	81	159	-	MF32
H37	EHS-2308	0.85	220-240	3.6	380-415	2.08	245/245	1.8	66	17	01*1/01*1	MF10
H38	EHS-3319	1.9	220-240	7.0	380-415	4.0	300/300	3.0	69	25	02*1/02*1	MF12
H39	EHS-3326	2.6	220-240	9.5	380-415	5.5	350/435	3.0	69	28	02*1/02*1	MF12
H40	EHS-4337	3.7	220-240	13.2	380-415	7.7	405/415	4.5	77	40	02*1/02*1	MF16
H41	EHS-4346	4.6	220-240	16.2	380-415	9.3	410/500	4.5	77	43	02*1/02*1	MF16
H42	EHS-6346	4.6	220-240	16.2	380-415	9.3	380/350	6.2	79	55	02*1/02*1	MF16
H43	EHS-6355	6.3	220-240	26.5	380-415	15.3	425/530	6.2	79	72	02*1/02*1	MF16
H44	EHS-6375	8.6	220-240	34	380-415	19.6	450/675	6.2	79	80.5	02*1/02*2	MF16
H45	EHS-6455	6.3	220-240	26.5	380-415	15.3	180/170	9.2	79	70	01*1/01*1	MF16
H46	EHS-6475	8.6	220-240	34	380-415	19.6	260/260	9.2	79	80.5	01*1/01*1	MF16
H47	EHS-8310	8.6	220-240	34	380-415	19.6	295/290	10.9	81	112	02*1/02*1	MF20
H48	EHS-8315	15	220-240	51.5	380-415	29.8	455/600	10.9	81	142	02*1/02*3	MF20
H49	EHS-8320	22	220-240	76.1	380-415	44	-/780	10.9	81	160	-/02*3	MF20
H50	EHS-8410	8.6	220-240	34	380-415	19.6	110/110	16.5	81	110	-	MF20
H51	EHS-8415	15	220-240	51.5	380-415	29.8	260/230	16.5	81	140	-	MF20
H52	EHS-9320	15	220-240	51.5	380-480	29.8	250/210	23	80	165	-	MF32
H53	EHS-9325	22	220-240	76.1	380-480	44	330/370	23	80	178	-	MF32
H54	EHS-9420	15	220-240	51.5	380-480	29.8	130/120	40	85	170	-	MF32
H55	EHS-9425	22	220-240	76.1	380-480	44	210/190	40	85	200	-	MF32

三相馬達, 60HZ吸/吐曲綫圖 three-phase motor, 60Hz handling curve diagram





用途:

- 印刷機械
- 燃燒機
- 塑料押出機、吹袋機淋膜機
- 制果機械
- 集塵機
- 環境機械
- 熱風發生機
- 粉粒體輸送
- 廚房機械
- 木工機械
- 乾燥機
- 焚化爐
- 恆溫箱
- 機械冷卻
- 一般送風

特點:

- 高壓 大風量 • 低噪音 • 輕量化
 - 採用鋁合金材質，大幅降低重量，達到輕量化的目的。
 - 馬達為I.E.C設計 (1HP以上)，全閉外扇型鋁框馬達，特殊軸心設計，可適合長時間使用。
 - 特殊葉片設計，壓力高 • 風涼大 • 噪音低 • 壽命長。
 - 特殊風量調節風門，風量控制穩定性高，操作容易 (CX.TB.ETB適用)。
- 樣式種類齊全 • 庫存多 • 交貨速度。

Applications:

- Printing Machines
- Burning Machines
- Plastic Extruder, Laminating, Film Making Machines
- Uniform Temperature Equipment
- Household Machines
- Dust Collectors
- Textile Machines
- Pollution Machines
- Hot Air Blower
- Dryers Machines
- Incinerators
- Machinery for the Food and Beverage Industrise
- Machinery for Cooling
- Woodworking Machines
- Grain elevators

Features:

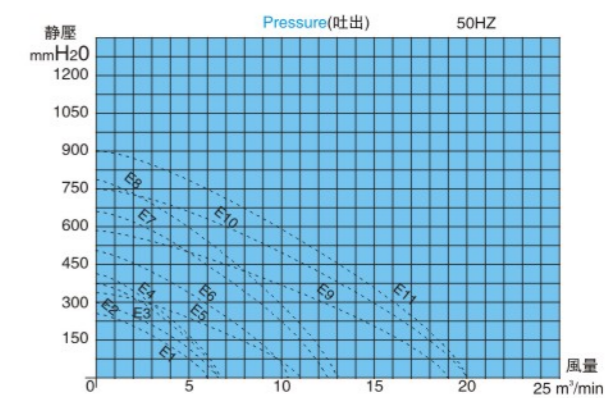
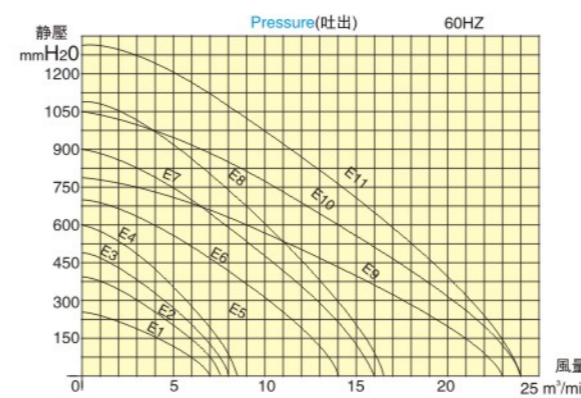
- High preeur • Larger flow • Light weight
- Aluminum alloy material was wide spread be use, offer light products,
- I.E.C.Designrd motor(1HP UP), Squirrel Cage Induction Motors& specially designated shaft can satisfy long-time-continue operation.
- Professional impeller dseigned, high pressure, larger flow • low noise • and long life.
- Special air-flow-adjust designs offer stable flows and easily control.
- Full range styles and suffciently finished products of each model make quickly delivery be possible.

IP54 50HZ 三相 中壓風機 blowers Medium pressure three phase Ac, IP54, 50hz

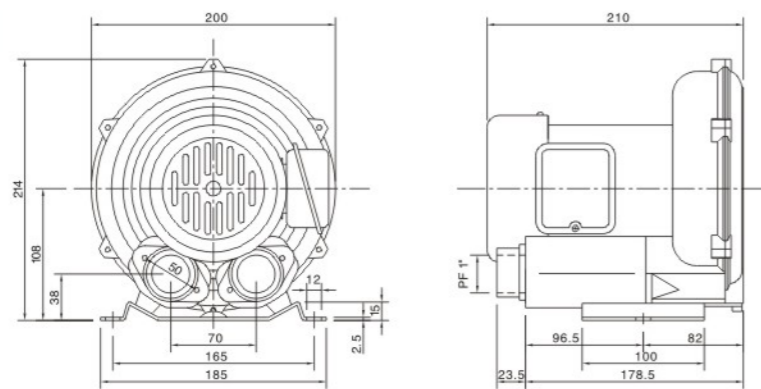
編號 Curve NO.	型號 Model	功率 Power (KW)	電壓 Voltage (V)	滿載額定電流 Current (A)	電壓 Voltage (V)	滿載額定電流 Current (A)	最大靜壓 吐出 Pressure(max) (mmH2O)	最大風量 Air Flow(max) m ³ /min	噪音 Noise Level dB	重量 Weight kgs	出入口徑 In/Out Let
E1	ETB-75-032	0.4	220-240	2.25	380-415	1.29	21	6	53	21	3"
E2	ETB-75-053	0.4	220-240	2.25	380-415	1.29	29	6.5	55	24	3"
E3	ETB-75-104	0.75	220-240	3.7	380-415	2.14	38	6.5	56	26	3"
E4	ETB-75-105	0.75	220-240	3.7	380-415	2.14	42	6.8	56	29	3"
E5	ETB-100-102	0.75	220-240	3.7	380-415	2.14	34	11	60	28	4"
E6	ETB-100-203	1.3	220-240	5.7	380-415	3.3	50	10.4	61	36	4"
E7	ETB-100-304	2.2	220-240	9.7	380-415	5.6	65	12.5	63	45	4"
E8	ETB-100-505	3.4	220-240	12.5	380-415	7.2	79	12.8	64	55	4"
E9	ETB-125-503	3.4	220-240	12.5	380-415	7.2	58	19	70	62	5"
E10	ETB-125-704	5.5	220-240	21	380-415	12	75	20	70	87	5"
E11	ETB-125-1005	7.5	220-240	27	380-415	15.6	90	20	72	109	5"

IP54 60HZ 三相 中壓風機 blowers Medium pressure three phase Ac, IP54, 60hz

編號 Curve NO.	型號 Model	功率 Power (KW)	電壓 Voltage (V)	滿載額定電流 Current (A)	電壓 Voltage (V)	滿載額定電流 Current (A)	最大靜壓 吐出 Pressure(max) (mmH2O)	最大風量 Air Flow(max) m ³ /min	噪音 Noise Level dB	重量 Weight kgs	出入口徑 In/Out Let
E1	ETB-75-032	0.5	220-240	2.4	380-415	1.38	26	7	65	21	3"
E2	ETB-75-053	0.5	220-240	2.4	380-415	1.38	38	7.5	68	24	3"
E3	ETB-75-104	0.85	220-240	3.9	380-415	2.25	50	8	70	26	3"
E4	ETB-75-105	0.85	220-240	3.9	380-415	2.25	60	8.5	70	29	3"
E5	ETB-100-102	0.85	220-240	3.9	380-415	2.25	45	13	74	28	4"
E6	ETB-100-203	1.5	220-240	6	380-415	3.5	70	14	76	34	4"
E7	ETB-100-304	2.6	220-240	9.5	380-415	5.5	90	16	78	45	4"
E8	ETB-100-505	4.6	220-240	16.2	380-415	9.3	110	16.5	80	55	4"
E9	ETB-125-503	4.6	220-240	16.2	380-415	9.3	79	23	85	62	5"
E10	ETB-125-704	6.3	220-240	26.5	380-415	15.3	105	24	88	87	5"
E11	ETB-125-1005	8.6	220-240	34	380-415	19.6	130	24	90	109	5"

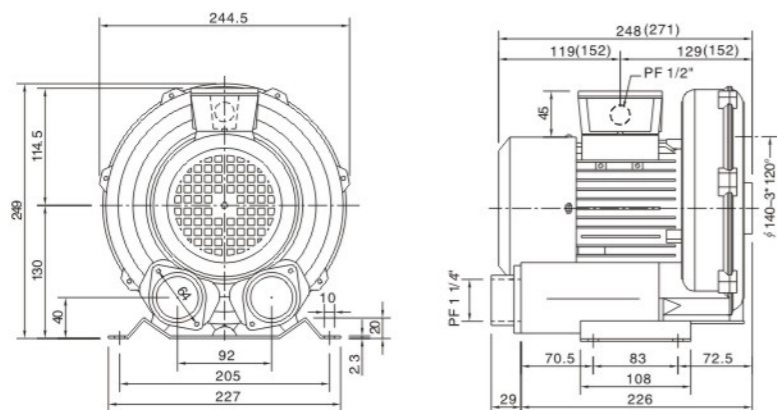


EHS129

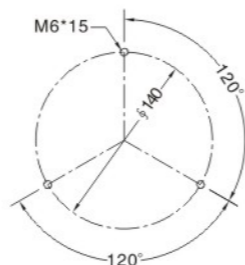


單位 (Unit) : mm

EHS229

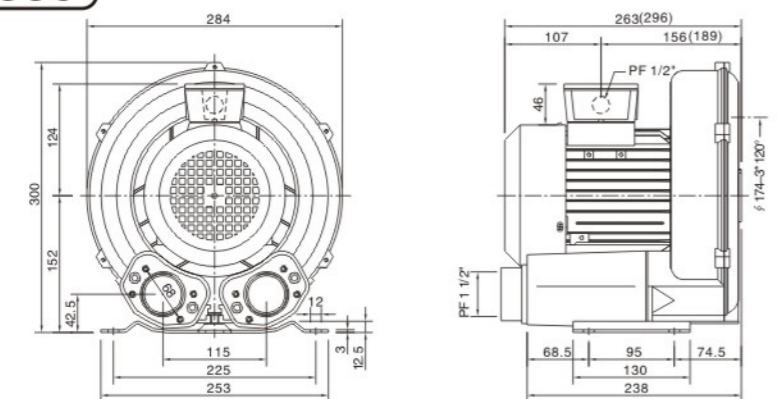


注: 271 (mm)為EHS229L系列的尺寸
152 (mm)為EHS229L系列的尺寸
Note: 271 (mm) is size of EHS229L series.
152 (mm) is size of EHS229L series.

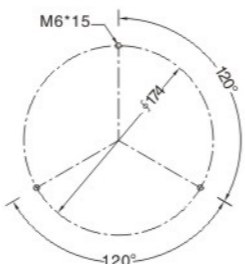


單位 (Unit) : mm

EHS329/S339

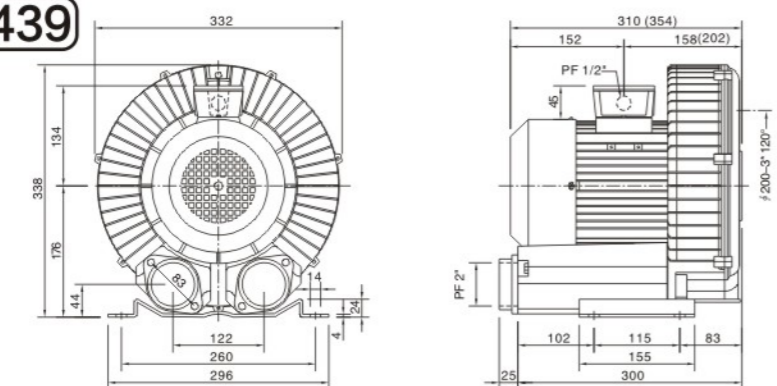


注: 296 (mm)為EHS329L系列的尺寸
189 (mm)為EHS329L系列的尺寸
Note: 296 (mm) is size of EHS329L series.
189 (mm) is size of EHS329L series.

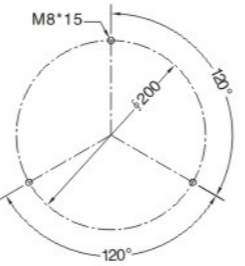


單位 (Unit) : mm

EHS429/S439

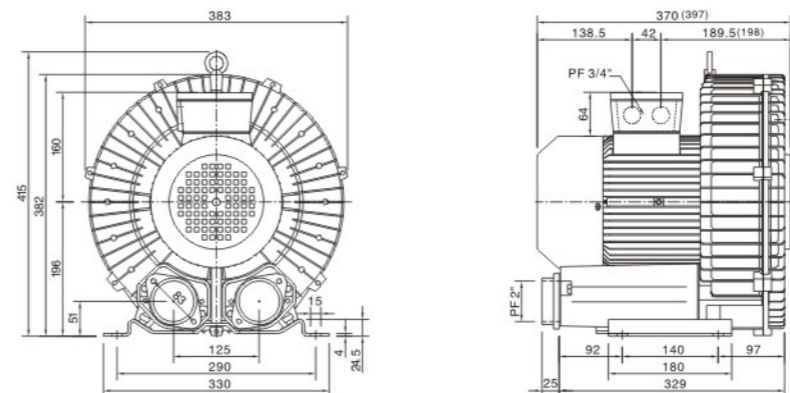


注: 354 (mm) 為EHS429L系列的尺寸
202 (mm) 為EHS429L系列的尺寸
Note: 354 (mm) is size of EHS429L series.
202 (mm) is size of EHS429L series.

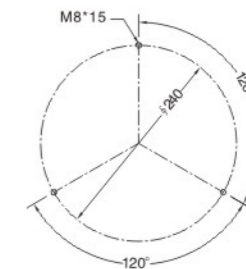


單位 (Unit) : mm

EHS529/629/639

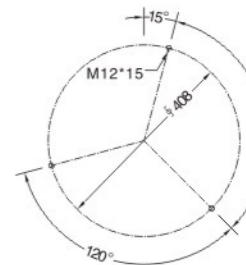
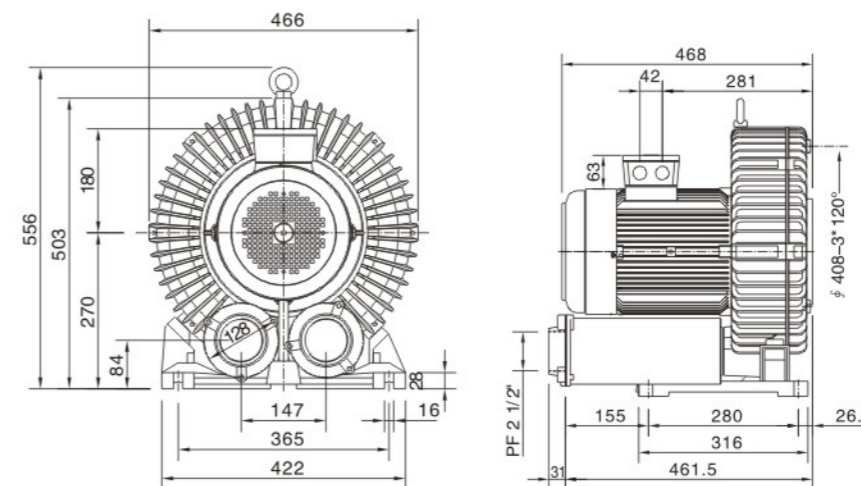


注: 397 (mm)為EHS529系列的尺寸
198 (mm)為EHS529L系列的尺寸
Note: 397 (mm) is size of EHS529 series.
198 (mm) is size of EHS529L series.



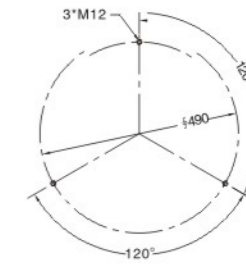
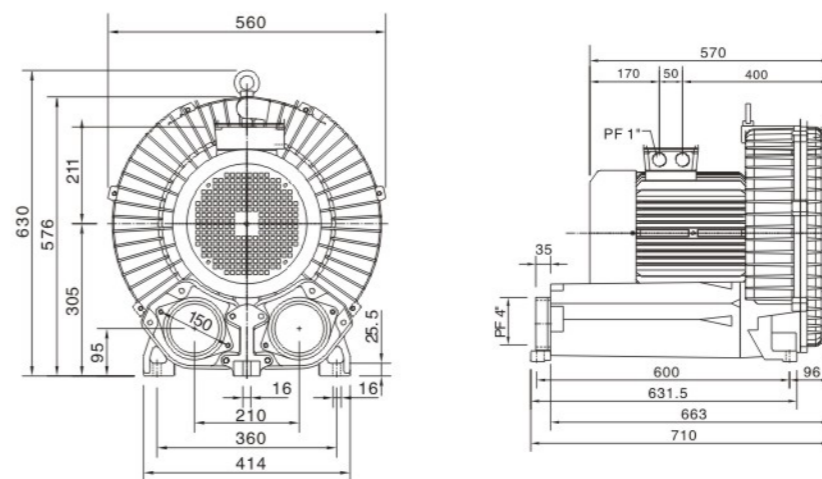
單位 (Unit) : mm

EHS729/829



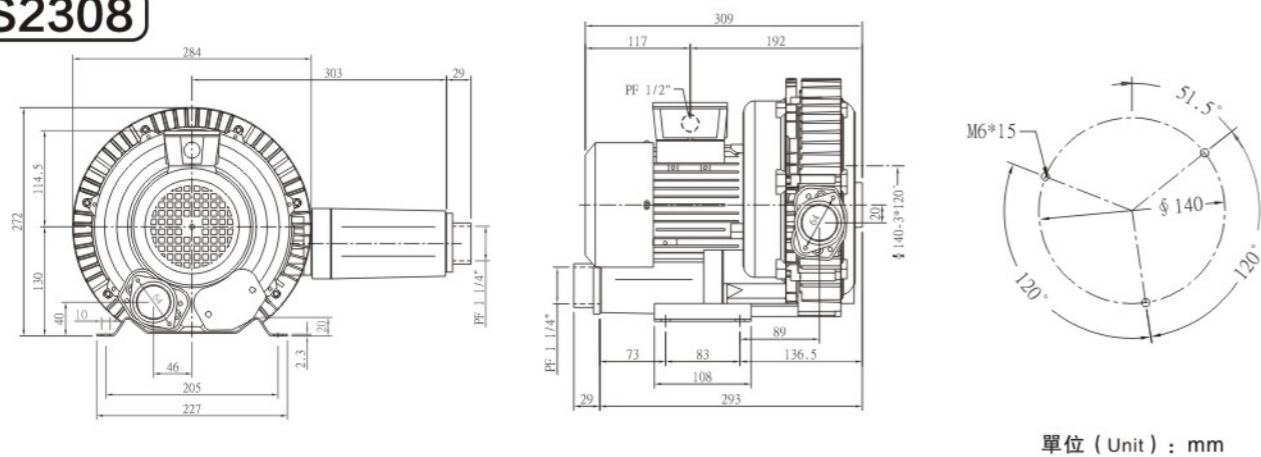
單位 (Unit) : mm

EHS912/929/939



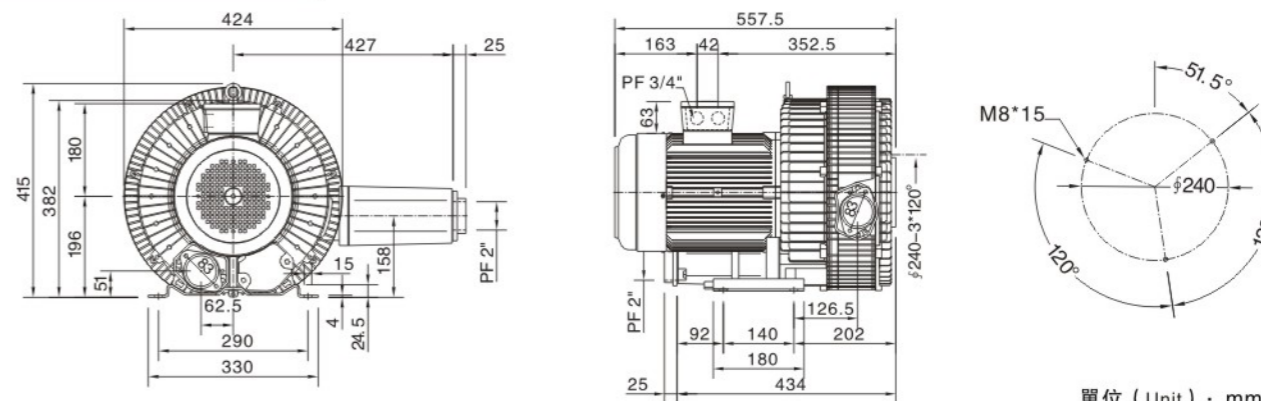
單位 (Unit) : mm

EHS2308



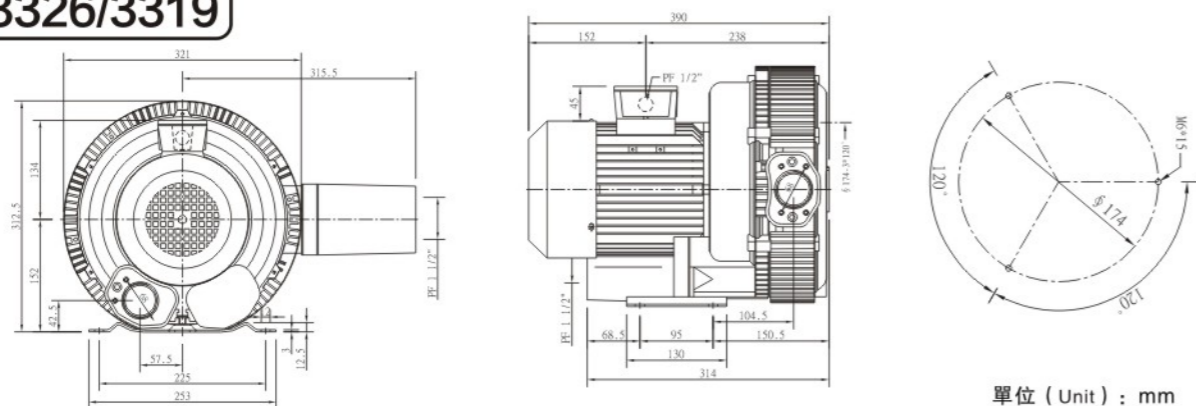
單位 (Unit) : mm

EHS6355/6375



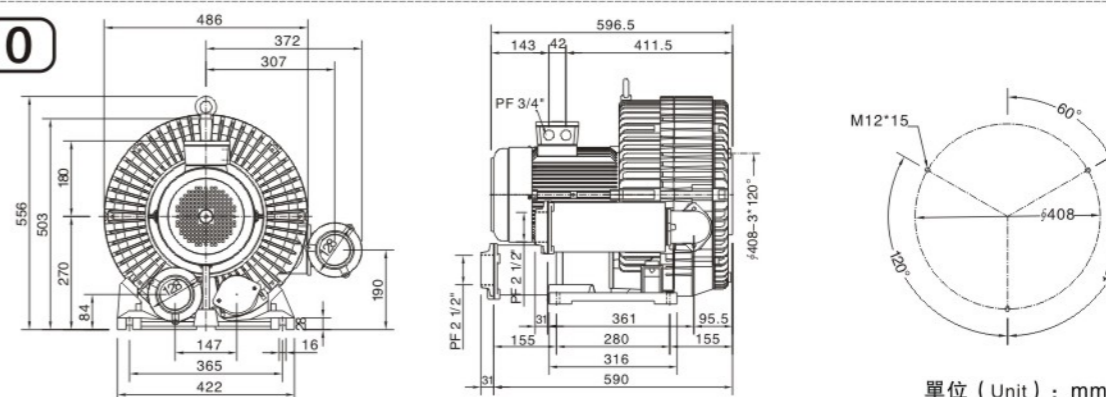
單位 (Unit) : mm

EHS-3326/3319



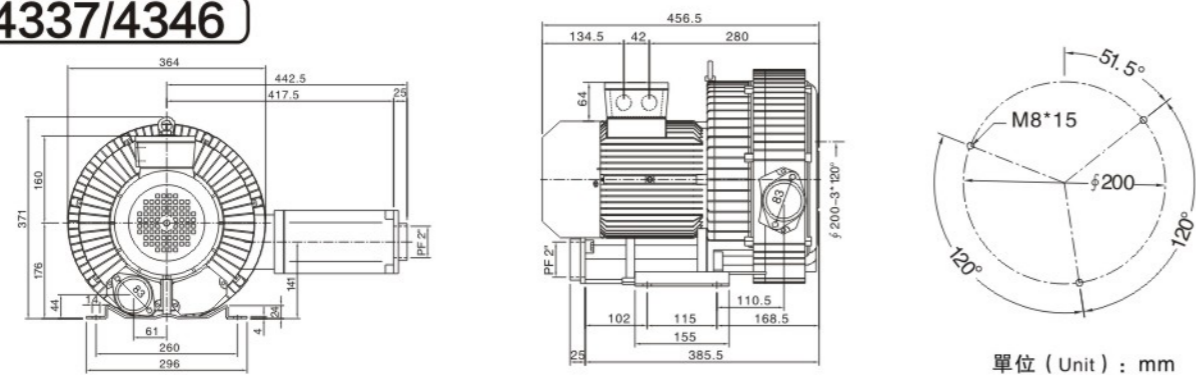
單位 (Unit) : mm

EHS8310



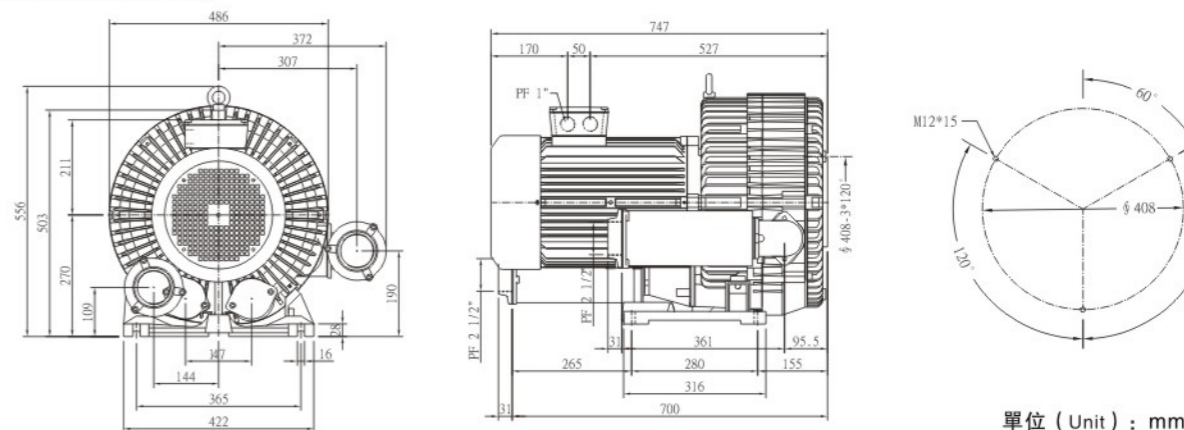
單位 (Unit) : mm

EHS4337/4346



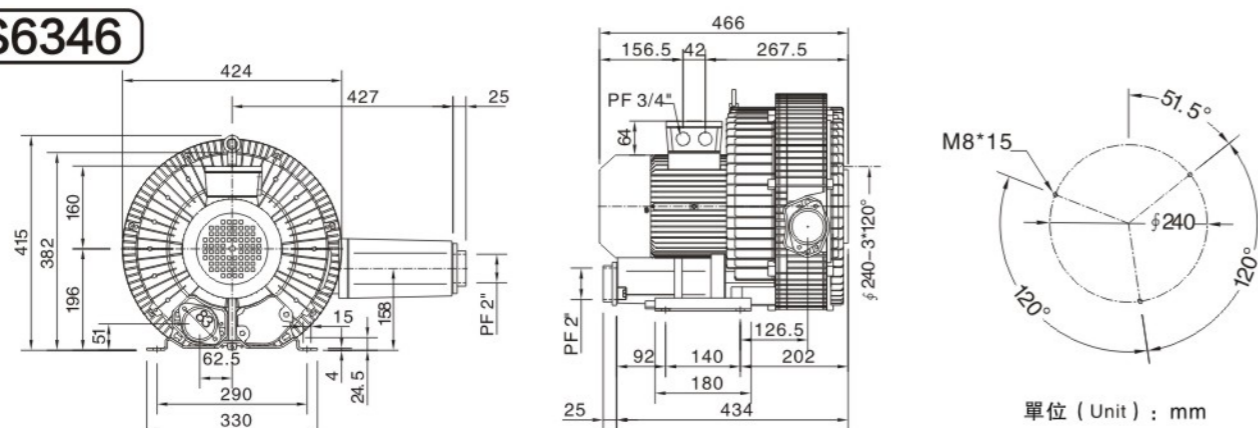
單位 (Unit) : mm

EHS-8315/8320



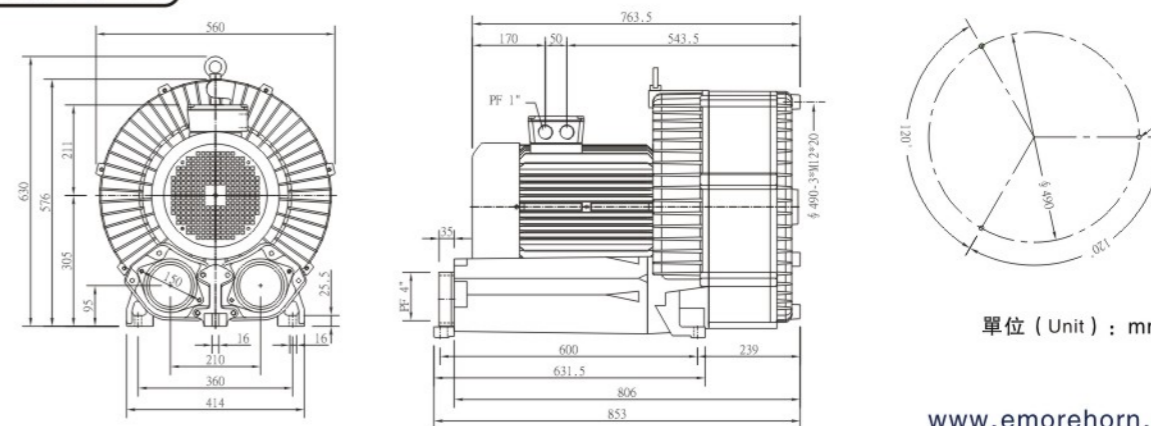
單位 (Unit) : mm

EHS6346



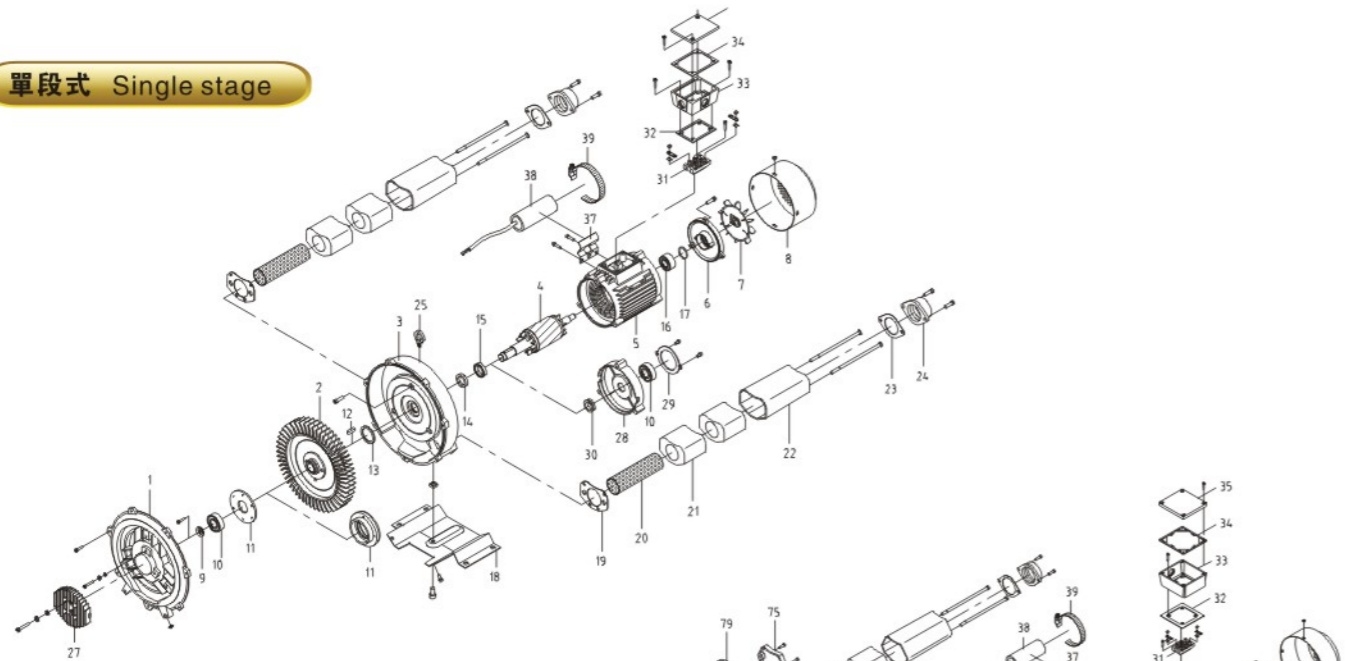
單位 (Unit) : mm

EHS9420/9425

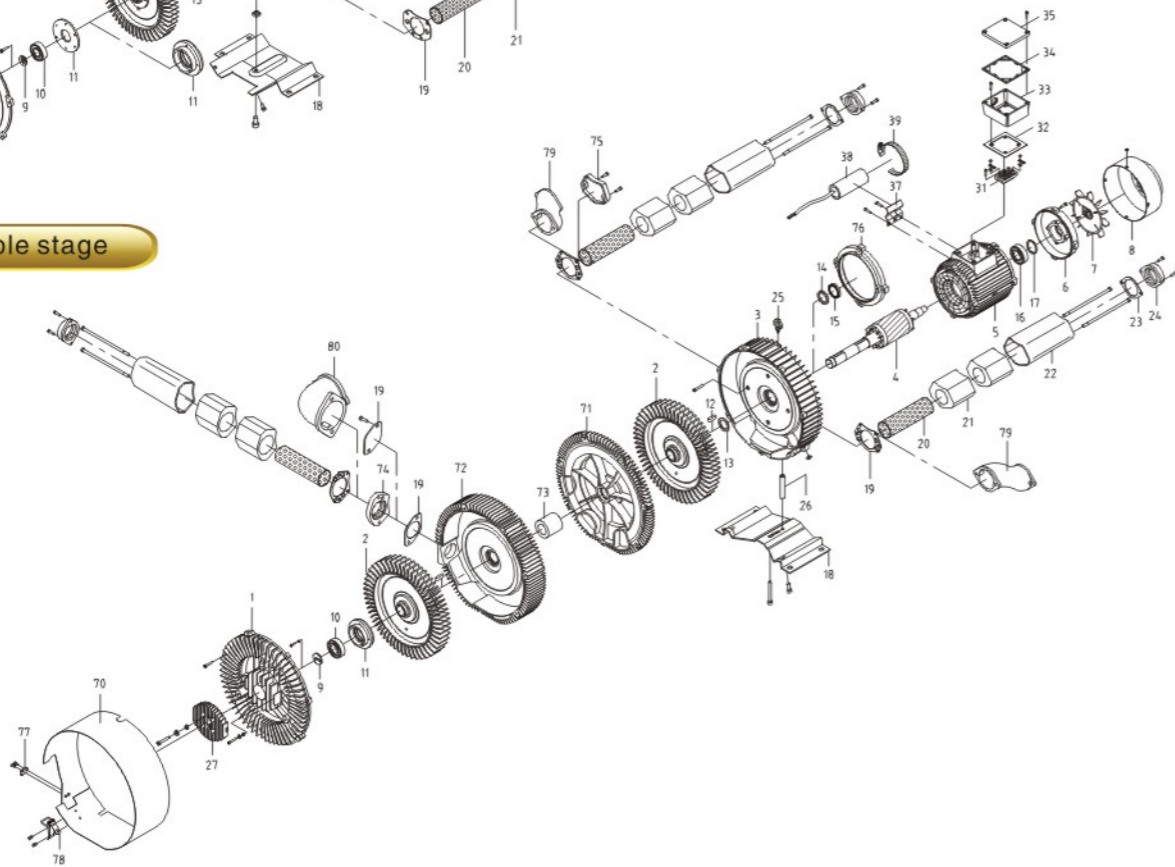


單位 (Unit) : mm

單段式 Single stage

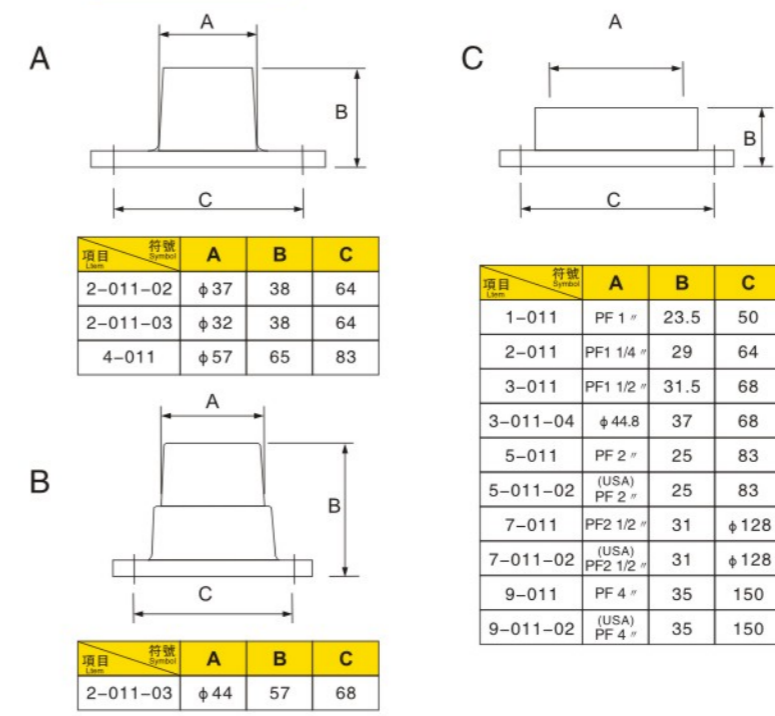


雙段式 Double stage

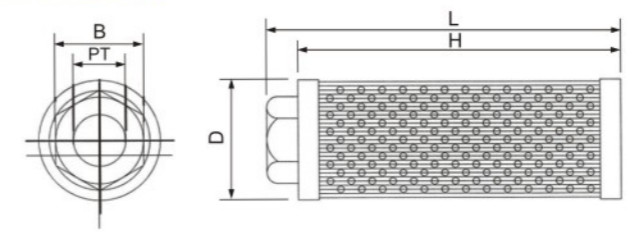


編號 ITEM	中文名稱 Chinese name	編號 ITEM	中文名稱 Chinese name	編號 ITEM	中文名稱 Chinese name	編號 ITEM	中文名稱 Chinese name
1	風蓋Cover	14	羊毛氈Felted wool	27	前軸承蓋Front bearing cap	71	中風蓋Middle cover
2	風葉Blade	15	油封Oil seal	28	馬達防水蓋Middle motor cover	72	中風桶Middel bucket
3	風桶Bucket	16	後軸承Back bearing	29	軸承固定片Bearing washer	73	葉片固定套Blade fixing set
4	轉子Rotor	17	波浪墊片Wave washer	30	VA-油封 VA-seal	74	腳管固定座Silencer socket
5	馬達Motor	18	腳座Iron base	31	接線板Terminal board	75	出口封蓋Outlet cover
6	馬達後蓋Motor rear cover	19	腳座墊片Gasket	32	墊片Gasket	76	馬達中蓋Middle motor cover
7	散熱風扇Radiator fan	20	消音鐵網Noise damping iron	33	接線盒Terminal box	77	上箱扣Buckle(up)
8	散熱鐵葉Fan cover	21	消音海綿Noise damping sponge	34	墊片Gasket	78	下箱扣Buckle(down)
9	墊片Gasket	22	消音腳管Silencer housing	35	接線盒Terminal cover	79	彎管Extend pipe
10	前軸承Bearing stop plate	23	出/入口墊片 Gasket	37	電容器固定片Capacitor washer	80	90°彎管 90° extend pipe
11	軸承蓋Bearing seat	24	出/入口Inlet/outlet thread	38	電容器Capacitor		
12	單圓鍵Rotor key	25	吊環 Ring	39	白鐵管束Steel clip		
13	墊片Gasket	26	圓管Round pipe	70	外觀鐵片Protection steel skin		

出/入口
Input/Output



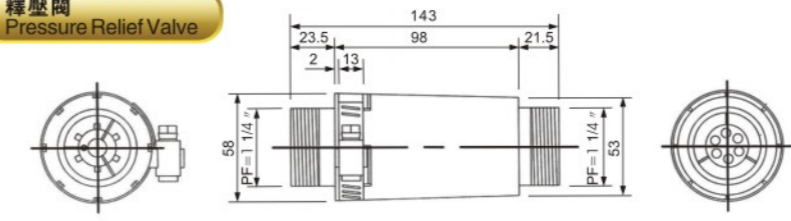
MF 型過濾器
MF Type Suction Filter



項目 Item	符號 Symbol	(PT)	D (mm)	L (mm)	H (mm)	B	過濾精度 Filtration mesh (目)	流量 Flow (L/min)	重量 Weight (KG)
MF-08	1"	58	170	155	42	100	110	0.20	
MF-10	1 1/4"	71	186	170	54	100	210	0.35	
MF-12	1 1/2"	85	196	182	65	100	285	0.49	
MF-16	2"	103	215	202	75	100	395	0.65	
MF-20	2 1/2"	148	274	252	97	100	750	1.20	
MF-32	4"	208	380	357	142	100	1000	2.45	

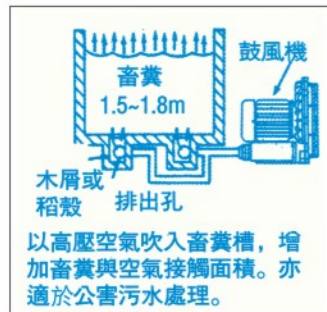


釋壓閥
Pressure Relief Valve

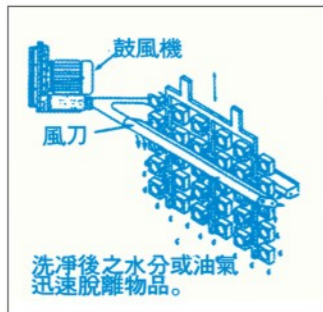


形式 Type	口徑 (PT)	L (mm)	規格 Dimension
RV-01	1 1/4"	143	0-3000 mmAq
RV-02	1 1/4"	143	0-6000 mmAq





畜糞發酵曝氣



洗淨後吹乾



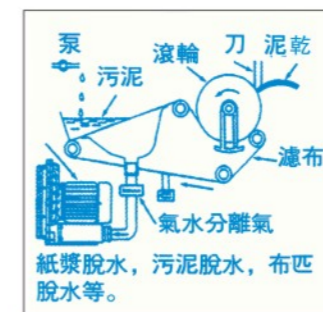
印刷強制乾燥



乾燥用氣刀



製書本機



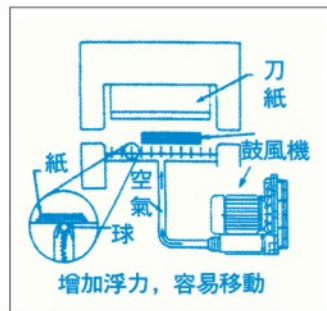
真空脫水



織布機吸絲



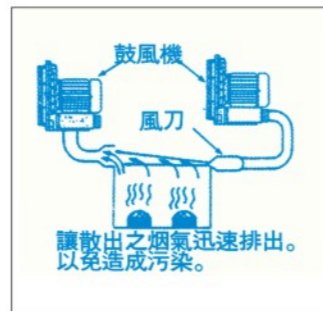
照相製版



裁紙機氣墊



瓦斯重油噴燃



煙氣吹吸



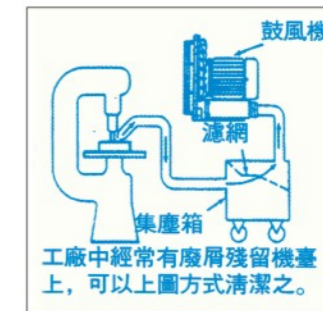
電解液攪拌



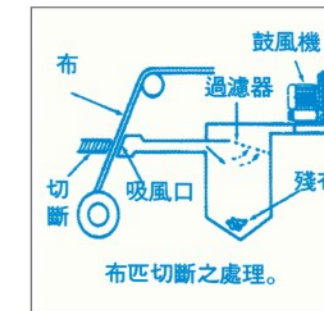
粉粒體輸送



印刷吸著



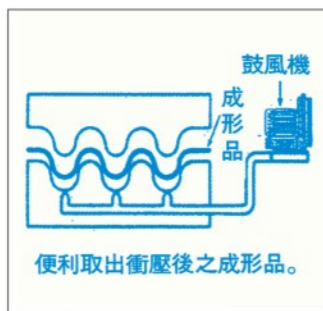
工業吸塵



殘布處理



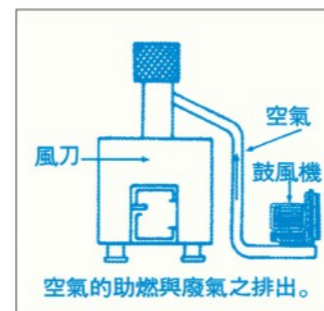
洗瓶機吹乾



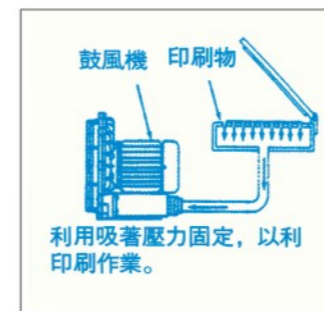
衝床機



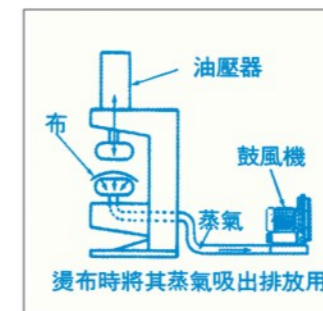
洗車吹乾



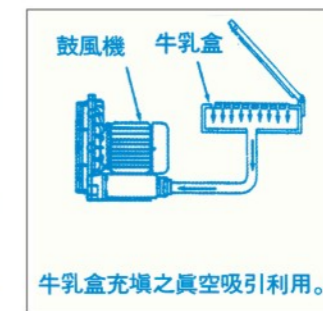
焚化爐



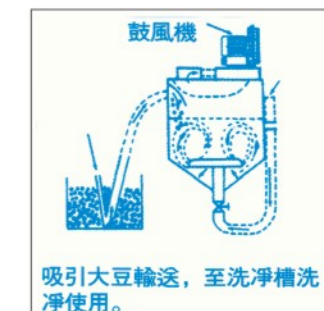
網版印刷機吸著



燙布機



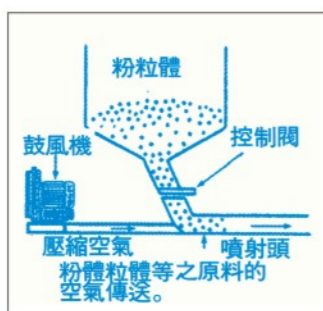
牛乳紙盒充填機



豆腐機械



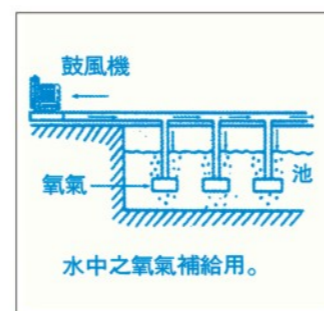
傳票輸送



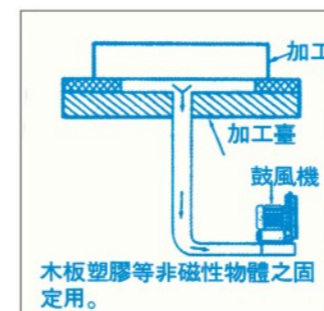
粉粒體輸送



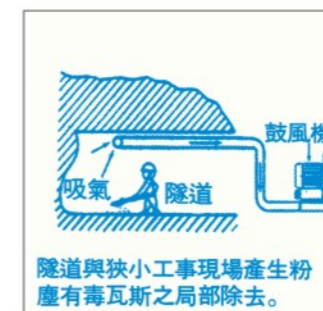
紙布條吹送



養殖池氧氣補給



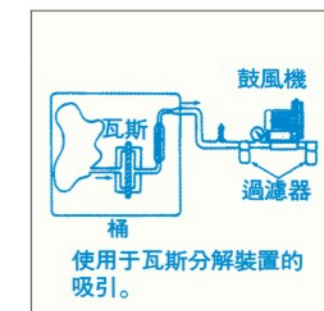
加工物保持



工事現場



焊接廢氣吸取



瓦斯分解

Animal excrement
1.5~1.8m
Chip or rice husk
Exhaust hole
Air blower

It blows to the animal excrement tank by the high pressure air. It increases the contact area between air and animal excrement. It is also applicable for disposing the nuisance sewage.

animal excrement fermentation SBR

Air blower
Wind power

Water, oil, or gas rapidly is separated from the objects after the cleaning

Drying after cleaning

Air blower
Heater
Warm air

It quickly dries the printed color.

Printed forced drying

Air blower
Dust
Water bead
Printed circuit board

The electronic circuit board can utilize the blower to get rid of the tiny dust and water drops.

Drying purpose air knife

Cutting knife
Supporting bar
Book
Air blower

Book suction and suction in cutting

Book maker

Pump
Sludge
Roller
Knife
Dried mud
Filter cloth
Gas / water separation

Pulp, sludge, cloth dewatering and so on

Vacuum dewatering

Yarn
Air blower
Dewatering hole

It sucks water and fixed thread, lifts up the product quality and efficiency.

Loom thread suction

Dark room
Air blower
Bent film lean board

It keeps the film by utilizing the vacuum suction to smooth it. It is fit for the photoplate making industry.

Photoplate making

Knife paper
Paper
Air
Ball
Air blower

It increases the floating force and is easy to move.

Paper cutter air cushion

Air blower
High pressure air
Fuel

High wind pressure (2,000mmAq) and the enough blast will reduce your reliance to the air compressor.

Gas creosote combustor

Air blower
Wind knife

It rapidly exhausts the fume in order to prevent from pollution.

Fume blowing and sucking

Air blower
electrolyte tank

It rapidly agitates the electrolyte tank, circulates the electrolyte, dispels the attached bubble, quickens the electroplating with the even effect. (Better 4mm exit hole)

Electrolyte agitation

Air blower
Tube
Filter mesh
Secondary air

The particle objects such as the plastic, rubber raw materials etc. can finish the conveying tasks by utilizing gas (blowing) or vacuum suction.

Powder and granule conveyance

Air blower
Roller
Suction roller

Vacuum suction printing or tissue forming, shifting

Printed suction

Air blower
Filter mesh
Dust-collection box

It often has the scrap residue in the factory machines. You can clean them by the above methods.

Industrial dust collection

Air blower
Cloth
Cut-off
Air suction
Residue cloth
Filter

Cloth cut-off disposal

Residue cloth disposal

Water bead
Empty bottle
Air blower

It water washes the empty drink bottle and dries the water drops. It is fit for the food industry.

Bottle cleaner drying

Air blower
Shaped products

It is easy to take out the punched parts to produce the final products.

Punch machine

Air blower

After cleaning the car, it will also dry it.

Car cleaning and drying

Wind knife
Air
Air blower

Air combustion and waste gas exhaust

Incinerator

Air blower
The printed materials

Utilize adhesive pressure to fixup, so as to develop printing task

Screen board printer suction

Oil press
Cloth
Air blower
Steam

In ironing the cloth, it sucks and exhausts the steam.

Cloth iron

Air blower

Vacuum suction and utilization of milk box filling

Milk paper box filler

Air blower

It sucks the bean conveyance until it cleans the tank for use.

Tofu machinery

Diagnosis
Cashier
Drugstore
Air blower

It uses air as the motive power to transmit the files with the fine speed and reliability.

Summons conveyance

Powder and granules
Air blower
Control valve
Compressed air
Jet head

Air transmission of powder, granular materials and so on

Powder and granule conveyance

Cutting knife
Roller
Air blower

It automatically collects the scraps after cutting the plastic, cloth, paper etc.

Paper and cloth delivery

Air blower
Oxygen
Pool

Oxygen supply in the water

Aquatic pool oxygen supply

Processing
Processing table
Air blower

Fix the non-magnetic objects such as wood board, plastic cement etc.

Processed materials suction

Air suction
Tunnel
Air blower

It partially removes the toxic gas and dust in the tunnel and narrow construction site.

Construction site

Air blower
Filter and clarifier
Filter
Exhaust pipe
Welder

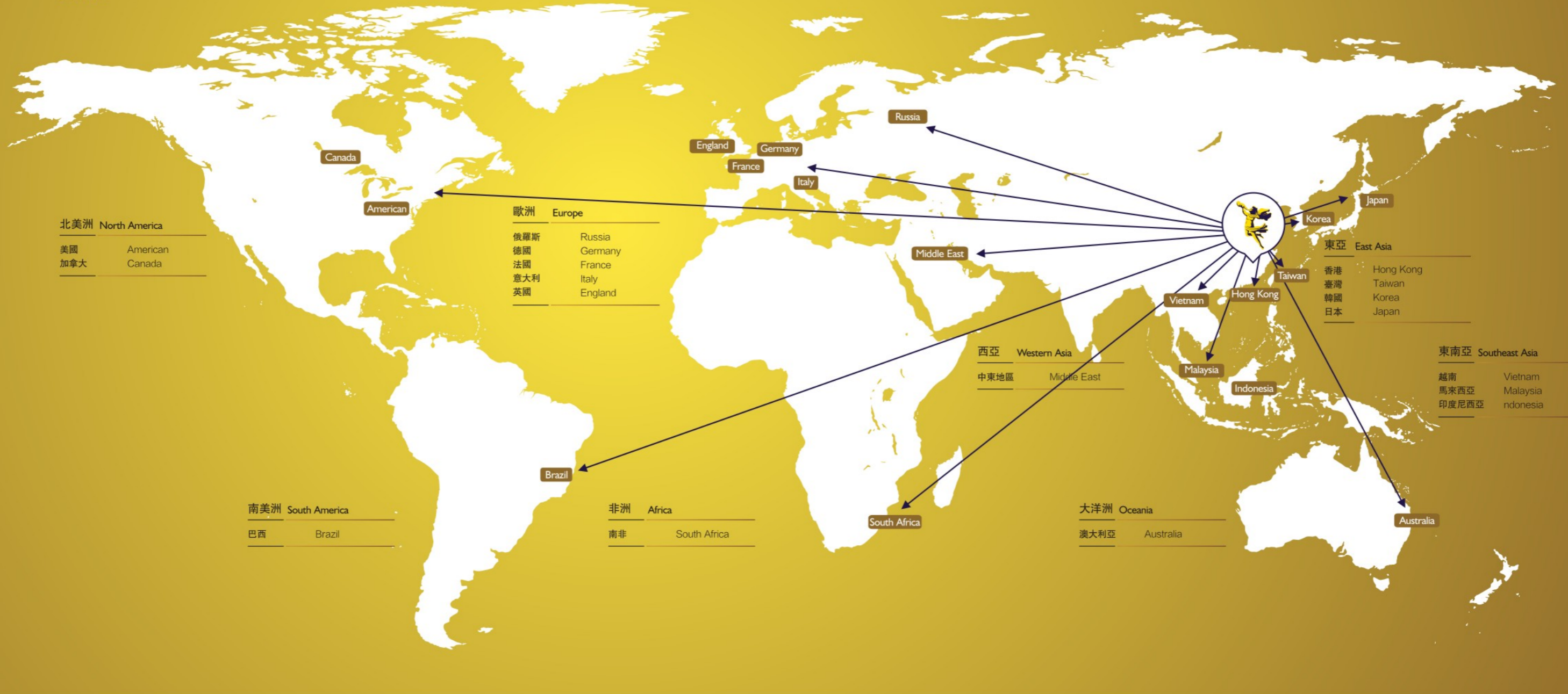
It can use the vacuum suction to remove the smoke, dust etc. in the welding part in order to ensure the good health of the operators.

It sucks the welding waste gas.

Air blower
Filter
Barrel

It is used to suck the gas disintegration device.

Gas disintegration



ISO9001:2000



我們總是根據市場需求的不斷變化，及時更新我們的產品以使我們的產品領先市場。目前，我們的產品遠銷至世界五大洲的18個國家。并贏得了客戶的高度認可。展望未來，我們信心百倍，將以更加奮發有為的精神，在瞬息萬變的市場大潮中激流勇進，開拓出更加輝煌燦爛的明天！

We update our products in time according to the changing market demand in order to make our products leading the market. Nowadays, our products are exported to 18 countries distributed over five continents and win high recognition from them. Looking to the future, we are confident and will take more effort on our products. We will try to develop more brilliant tomorrow in the fast-changing market.